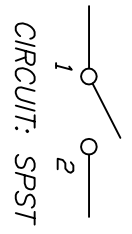
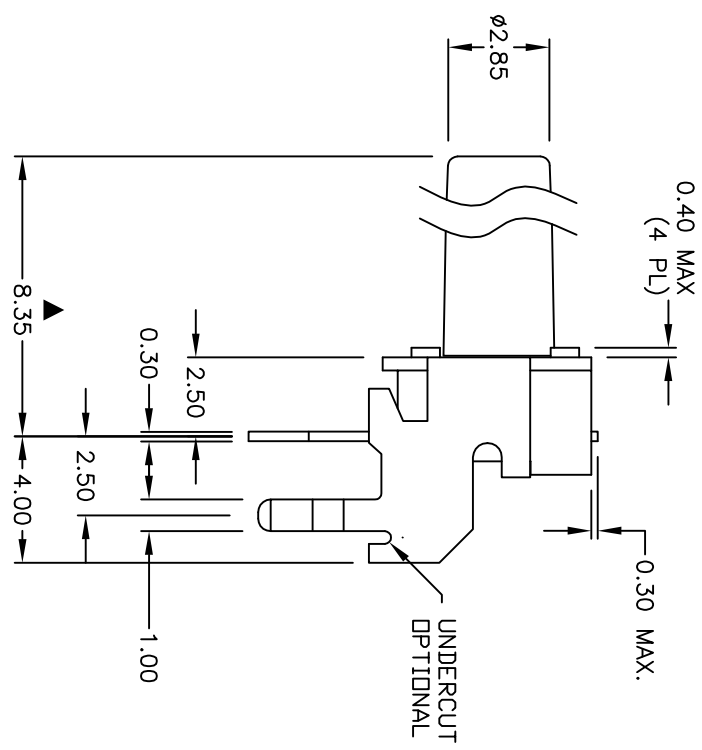
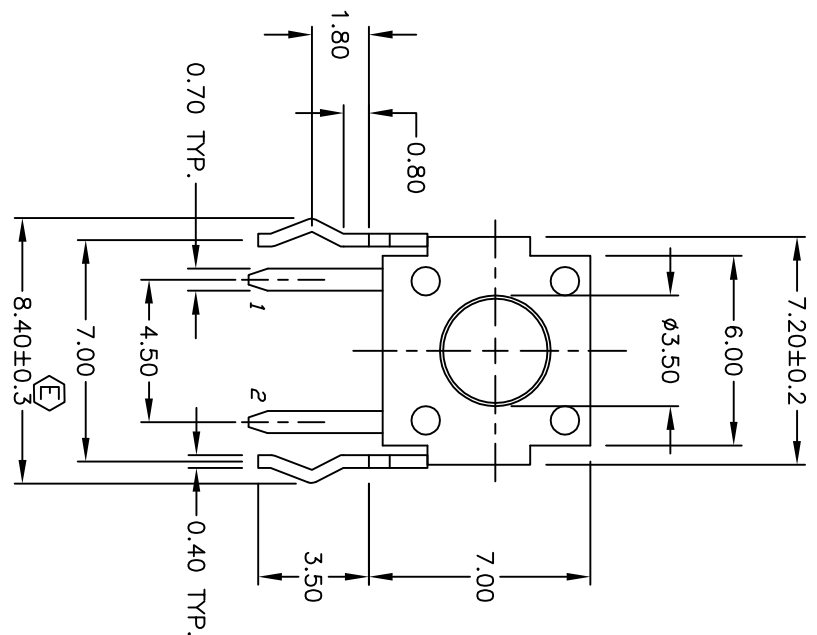


RECOMMENDED P.C.B. LAYOUT



- NOTES:
1. ALL DIMENSIONS IN MM
  2. GENERAL TOLERANCE: X.X=±0.4  
X.XX=±0.25
  3. TERM. NOS. FOR REF. ONLY
  4. RATING: 50mA, @12V DC
  5. TRAVEL: 0.25±0.1mm
  6. OPERATING FORCE: 160±50gf
  7. CONTACT RESISTANCE: 100 milliohms Max.
  8. ELECTRICAL LIFE: 100,000 CYCLES MIN.
  9. ▲ DENOTES CRITICAL PARAMETER
  10. ACTUATOR COLOR: BLACK
  11. HOUSING COLOR: BLACK
  12. 2002/95/EC (ROHS) COMPLIANT.



E	18313	LEG TOLERANCE WAS +/- 0.1	11/11/08	BLR
D	12370	REVISED AND REDRAWN	8/14/02	CJB
REV.	ECN NO.	DESCRIPTION	DATE	CHKD

TITLE		SCALE		DATE		DR		DWG		REV	
TL 1105 S F160 Q		4:1		11/11/08		BLR		P010299		E	

THE INFORMATION CONTAINED IN THIS DOCUMENT IS PROPRIETARY TO E-SWITCH AND IS NOT TO BE COPIED OR TRANSFERRED